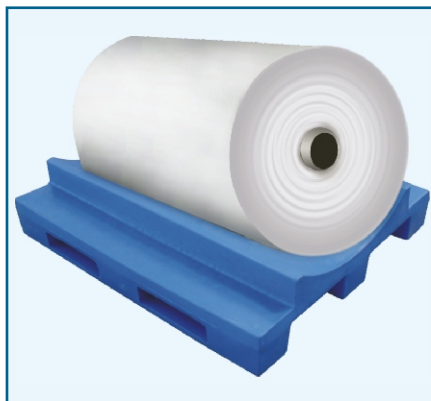


# Roto Molded Hygienic Pallets

The Best Combination of Hygiene, Performance, Strength & Sustainability





Hygiene, HACCP, GMP, Clean Room, Dust free shop floor, Bacteria –free operation, if all these sophisticated activities are relevant in your manufacturing & storage activity, insist for Nilkamal Hygiene pallet.

- Durable : Nilkamal pallets are Durable – expect life more than 5 years.
- Cost effective : Expect performance of SS 304@ price of plastic.
- Clean & Sanitary : Compliance with world's most stringent hygiene regulation.
- Easy Maintenance : Wipe & Clean, You can even do machine wash & steam clean
- Safety : Nilkamal Exclusive Rack Lock for locking pallet on standard Rack, Wings on Rail for Drive-In Rack, Stretch-Wrap Hook for secured packing.
- Designing : Nilkamal CNC capability to custom requirements for anti-skid, ultra hygiene or strapping, pilferage requirements to hi end texture designing as you see in Deck texture designs.
- Environment Friendly
- Resistant to commonly used chemicals
- Conductive Pallets available on request (For more details refer page 7).

## NILKAMAL PALLETS MANUFACTURED IN COMPLIANCE WITH :

	<b>HACCP</b> Hazard Analysis Critical Control Points	 Clean Room	 Wipe & Clean
	 Total Quality Management		 Food & Pharma Compliant

1) **Roto Pallet = RP**

3) **Pallet Surface** → Flat = **F**      Perforated = **P**      Chequered = **C**      Corrugated = **CO**      Excellence in Top Deck Texture = **D**

4) **Basic Design** → 3-Runner pallet = **3R**      9-Leg = **9L**      4-Runner = **4R**      5-Runner = **5R**      Reversible = **Rev**

                                 F3R      F9L      P3R      P9L      C3R      C9L      CO3R      CO9L      FREV

2) **Foot Print for 10cm multiples**      5) **Reinforcement :**      Polyurethane = **U**      6) **Suffix :** Select Appropriate Feature Variables  
 1200 x 1000 = **1210**      Polyethylene = **E**      Steel Reinforcement = **S**

length in 2 digits ● width in 2 digits for fork entry side

ALL THE PALLETS CAN BE SUPPLIED WITH ANTI-STATIC PROPERTIES

antistatic 

ALL THE PALLETS CAN BE SUPPLIED WITH CONDUCTIVE PROPERTIES

conductive 



Model Suffix	Foot-print	ROTO MOLDED PALLETS		* INJECTION MOLDED PALLETS										* WIRE MESH	* METAL PALLETS	
		ROTO 9 Legs	ROTO 3-runner	AP	SP	GMA	GMP	FP	DP	DPR	DSP	OW	EP		Hot Deep Galvanized	S.S.
0707	750 X 750	●	●													
8060	800 X 600												●			
9065	900 X 650				●											
9565	950 X 650						●			●						
9507	950 X 700						●									
9075	900 X 750	●														
0909	900 X 900		●													
1006	1000 X 600				●											
1008	1000 X 800		●		●									●		
1010	1000 X 1000	●	●	●	●		●		●	●	●	●			●	
1012	1000 X 1200		●													
1108	1100 X 800									●						
1182	1100 X 820			●	●											
1109	1100 X 900												●			
1110	1100 X 1000												●	●		
1111	1100 X 1100		●	●	●	●	●	●	●	●		●	●			
1114	1100 X 1400		●													
1197	1120 X 970						●									
1198	1140 X 980							●								
1109	1150 X 990		●													
1208	1200 X 800	●	●	●	●		●	●					●			●
1283	1200 X 830								●							
1210	1200 X 1000	●	●	●	●	●	●	●	●	●		●	●	●	●	●
1211	1200 X 1100											●				
1212	1200 X 1200	●	●	●	●		●		●	●	●		●	●	●	●
12510	1250 X 1000	●														
125125	1250 X 1250	●														
127095	1270 X 950					●										
127109	1270 X 1090					●										
1311	1300 X 1100		●				●	●	●			●				
131088	1310 X 880					●										
132110	1320 X 1100					●										
132094	1320 X 940												●			
135115	1350 X 1150									●						
138096	1380 X 960					●										
1411	1400 X 1100		●		●			●								
1411	1425 X 1125							●								
1412	1400 X 1200								●	●						
1412	1400 X 1225			●												
1510	1500 X 1000								●							
1512	1500 X 1200		●						●							
1515	1500 X 1500		●	●	●						●					
1612	1600 X 1200									●	●					
1616	1600 X 1600				●						●					
1812	1800 X 1200	●							●							
1814	1800 X 1430								●							
1818	1800 X 1800								●							
1995	1900 X 950								●		●					

\* Please refer separate brochure for our Injection Molded Pallets, Wire Mesh Pallets & Metal Pallets



## FEATURES VARIABLE SELECTION CHART :

Suffix	Rack Safety	Top Deck Border	Runner Position
1	Rack Lock	Safety Edge	Wing Runner
2	Rack Lock	No Safety Edge	Wing Runner
3	Rack Lock	No Safety Edge	Flush Runner
4	No Rack Lock	No Safety Edge	Flush Runner
5	No Rack Lock	No Safety Edge	Wing Runner
6	No Rack Lock	Safety Edge	Flush Runner
7	No Rack Lock	Safety Edge	Wing Runner
8	No Rack Lock	No Safety Edge	* Flush Runner (WFE)
9	Rack Lock	Safety Edge	Flush Runner
X	Rack Lock	No Safety Edge	Narrow Width Runner
Z1	Strapping on Top Deck Long Side		

\* WFE : Wide Fork Entry

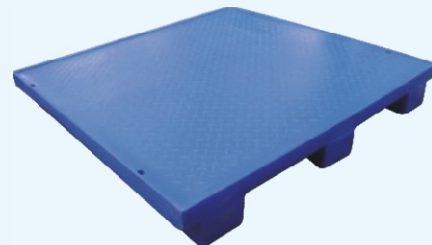
### SUFFIX 1

With Rack Lock, Safety Edge & Wing Runners



**RP1210F3RUS1**

1200 (L) x 1000 (W) x 150 (H) MM.



**RP1212C3RUS1Z1**

1200(L) x 1200(W) x 160(H) MM.

Model No.	Dimensions (L X W X H) in MM.	Static Load (Kg.)	Dynamic Load (Kg.)	Rack Load(Kg.)	Internal Width (W)			Internal Length (L)		
					h	B	A+B+A	h	F	E+F+E
RP1010F3RUS1	1000 x 1000 x 160	3000	1000	1000	110	140	620	--	--	--
RP1210F3RUS1	1200 x 1000 x 150	3000	1000	1000	110	140	620	--	--	--
RP1212F3RUS1	1200 x 1200 x 160	3000	1000	1000	100	140	820	--	--	--
RP1212C3RUS1Z1	1200 X 1200 X 160	6000	1200	1000	100	150	900	--	--	--
RP125F3RUS1	1250 x 1250 x 160	3000	1400	1000	110	150	810	--	--	--

### SUFFIX 2

With Rack Lock, No Safety Edge & With Wing Runners



**RP1210F3RUS2**

1200 (L) x 1000 (W) x 150 (H) MM.

Model No.	Dimensions (L X W X H) in MM.	Static Load (Kg.)	Dynamic Load (Kg.)	Rack Load(Kg.)	Internal Width (W)			Internal Length (L)		
					h	B	A+B+A	h	F	E+F+E
RP1210F3RUS2	1200 x 1000 x 160	3000	1000	1000	110	140	620	--	--	--
RP1212F3RUS2	1200 x 1200 x 160	3000	1000	1000	100	150	710	--	--	--

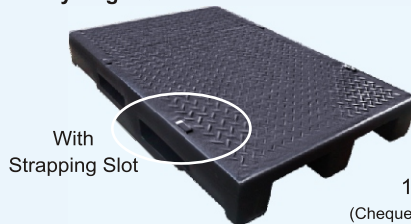


## SUFFIX 3

With Rack Lock, No Safety Edge & With Flush Runners



**RP0707F3RU3**  
750 (L) x 750 (W) x 150 (H) MM.



**RP1385DC3RUS3Z1**  
1320(L) x 850 (W) x 165(H)MM.  
(Chequered Top & Bottom, Strapping Slot, 4 Way Entry)

Model No.	Dimensions (L X W X H) in MM.	Static Load (Kg.)	Dynamic Load (Kg.)	Rack Load(Kg.)	Internal Width (W)			Internal Length (L)		
					h	B	A+B+A	h	F	E+F+E
RP0707F3RU3	750 x 750 x 150	1000	500	--	110	140	600	--	--	--
RP0909F3RU3	900 x 900 x 150	2000	1000	500	110	140	660	65	150	510
RP1010CO3RUS3/4/5Z1	1000 x 1000 x 160	3000	1000	1000	100	100	790	--	--	--
RP1208F3RU3	1200 x 800 x 150	2000	1000	500	100	120	560	--	--	--
RP1208DB3RUS3Z1	1200 x 800 x 160	3000	1000	1000	105	110	600	--	--	--
RP1210F3RUSX3	1200 x 1000 x 160	3000	1000	1000	110	110	780	--	--	--
RP1210DE3RUSX3	1200 x 1000 x 160	3000	1000	1000	110	110	780	--	--	--
RP127127F3RUS3	1275 x 1275 x 200	6000	1500	1000	150	145	980	--	--	--
RP1385DC3RUS3Z1	1320 x 850 x 165	3000	1000	1000	110	125	600	40	200	700

## SUFFIX 4

With No Rack Lock, No Safety Edge & With Flush Runners



**RP0909F3RUS4**  
900 (L) x 900 (W) x 150 (H) MM.



**RP1010P2R3LUS4**  
1000(L) x 1000(W) x 150(H) MM.



**RPROL1210F3RU4**  
1200 (L) x 1000 (W) x 260 (H) MM.

Model No.	Dimensions (L X W X H) in MM.	Static Load (Kg.)	Dynamic Load (Kg.)	Rack Load(Kg.)	Internal Width (W)			Internal Length (L)		
					h	B	A+B+A	h	F	E+F+E
RP0810F3RU4	800 x 1000 x 160	1000	500	500	105	150	700	--	--	--
RP0909F3RU4	900 x 900 x 150	2000	1000	500	100	150	650	65	150	510
RP1010200F3RUS4	1000 x 1000 x 200	3000	1000	800	140	150	690	--	--	--
RP1010P2R3LUS4	1000 x 1000 x 160	3000	1000	1000	118	100	780	--	--	--
RP1010CO3RUS4	1000 x 1000 x 160	3000	1000	1000	100	100	790	--	--	--
RP1010CO3RUS3/4/5Z1	1000 x 1000 x 160	3000	1000	1000	100	100	790	--	--	--
RP1012F3RUS4	1000 x 1200 x 150	3000	1000	1000	110	139	911	--	--	--
RP1109P3RUS4	1150 x 990 x 155	3000	1000	1000	--	--	--	95	100	945
RP1208F3RU4	1200 x 800 x 150	2000	1000	500	105	110	570	--	--	--
RP1208170F3RUS4	1200 x 800 x 170	3000	1000	1000	105	110	570	--	--	--
RP1210F3RUS4	1200 x 1000 x 160	3000	1000	1000	100	150	700	--	--	--
RP1210170F3RUS4	1200 x 1000 x 170	3000	1000	1000	100	150	700	--	--	--
RP1210CO3RUS4	1200 x 1000 x 175	4000	1200	1000	130	140	730	85	130	910
RPROL1210F3RU4	1200 x 1000 x 260	2000	1000	800	110	140	710	70	200	800
RP12105C3RUS4	1200 x 1050 x 240	3000	1000	1000	180	150	800	--	--	--
RP1212F3RUS4	1200 x 1200 x 160	3000	1000	1000	100	140	900	--	--	--
RP134120F3RUS4	1340 x 1200 x 160	4000	1500	1000	100	140	910	--	--	--
RP1512F3RUS4	1500 x 1200 x 160	6000	1500	1000	100	200	800	60	500	900



## SUFFIX 5

With No Rack Lock, No Safety Edge & With Wing Runners



**RP105120F3RUS5**

1050 (L) x 1200 (W) x 160 (H) MM.

Model No.	Dimensions (L X W X H) in MM.	Static Load (Kg.)	Dynamic Load (Kg.)	Rack Load(Kg.)	Internal Width (W)			Internal Length (L)		
					h	B	A+B+A	h	F	E+F+E
RP105120F3RUS5	1050 x 1200 x 160	3000	1000	1000	100	150	590	--	--	--
RP1311F3RUS5	1300 x 1100 x 160	3000	1000	1000	100	150	680	--	--	--

## SUFFIX 6

With No Rack Lock, With Safety Edge & With Flush Runners



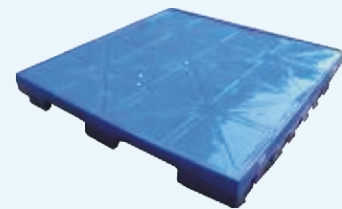
**RP0812C4RUS6**

800(L) x 1200(W) x 200(H)mm



**RP1208P5RUS6**

1200 (L) x 800 (W) x 155 (H) MM.



**RP1515DA3RUS6**

1500(L) x 1500(W) x 160(H)MM.

Model No.	Dimensions (L X W X H) in MM.	Static Load (Kg.)	Dynamic Load (Kg.)	Rack Load(Kg.)	Internal Width (W)			Internal Length (L)		
					h	B	A+B+A	h	F	E+F+E
RP0812C4RUS6	800 x 1200 x 200	3000	1000	1000	120	65	1040	--	--	--
RP1111CO3RUS6	1100 x 1100 x 160	3000	1000	1000	100	140	810	--	--	--
RP1108C3RUS6	1130 x 830 x 170	3000	1000	1000	105	120	590	--	--	--
RP1208P5RUS6	1200 x 800 x 155	3000	1000	1000	90	125	625	90	95	745
RP1208180DD3RUS6	1215 x 810 x 180	4000	1200	1000	100	110	600	--	--	--
RP1212CO3RUS6	1200 X 1200 X 170	3000	1200	1000	100	150	900	--	--	--
RP1515DA3RUS6	1500 x 1500 x 160	6000	1500	1500	100	220	910	--	--	--

## SUFFIX 7

With No Rack Lock, With Safety Edge & Wing Runners



**RP1114P3RUS7**

1100 (L) x 1400 (W) x 160 (H) MM.

Model No.	Dimensions (L X W X H) in MM.	Static Load (Kg.)	Dynamic Load (Kg.)	Rack Load(Kg.)	Internal Width (W)			Internal Length (L)		
					h	B	A+B+A	h	F	E+F+E
RP1114P3RUS7	1100 x 1400 x 160	3000	1400	1400	100	150	880	--	--	--



### SUFFIX 8

With No Rack Lock, No Safety Edge & Flush Runners With Wide Fork Entry



**RP1210F3RUS8**  
1200 (L) x 1000 (W) x 160 (H) MM.

Model No.	Dimensions (L X W X H) in MM.	Static Load (Kg.)	Dynamic Load (Kg.)	Rack Load(Kg.)	Internal Width (W)			Internal Length (L)		
					h	B	A+B+A	h	F	E+F+E
<b>RP0909F3RU8</b>	900 x 900 x 160	2000	1000	500	110	150	708	--	--	--
<b>RP1208C3RUS8</b>	1200 x 800 x 160	3000	1000	1000	105	116	610	--	--	--
<b>RP1210F3RUS8</b>	1200 x 1000 x 160	3000	1000	1000	100	110	780	--	--	--

### SUFFIX 9

With Rack Lock, Safety Edge & Flush Runners



**RP1010CO3RUS9**  
1000 (L) x 1000 (W) x 160 (H) MM.

Model No.	Dimensions (L X W X H) in MM.	Static Load (Kg.)	Dynamic Load (Kg.)	Rack Load(Kg.)	Internal Width (W)			Internal Length (L)		
					h	B	A+B+A	h	F	E+F+E
<b>RP1010CO3RUS9</b>	1000 x 1000 x 160	4000	2000	1500	100	150	720	--	--	--

### 4 RUNNER PALLETS

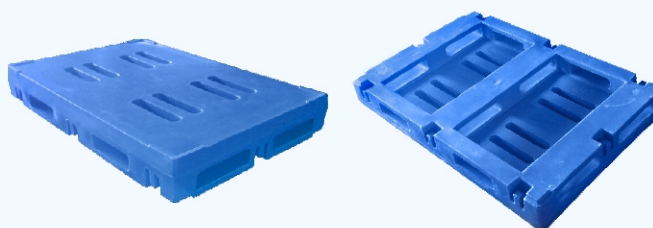
With No Rack Lock, With Safety Edge  
& With 4 Flush Runners



**RP0812C4RUS6**  
800(L) x 1200(W) x 200(H)mm

### 5 RUNNER PALLETS

With No Rack Lock, With Safety Edge & With 5 Flush Runners



**RP1208P5RUS6**  
1200 (L) x 800 (W) x 155 (H) MM.

### CONDUCTIVE PALLETS :

**Nilkamal ESD & Conductive Pallets** : India's only manufacturer & exporter for large range of conductive pallets. Hundreds of times each day Electro Static Discharge (ESD) occur without prior notice. It can not be avoided for Electronic components, sensors during assembly, processing, storage & transportation. The energy of static discharge in a semi conductor can behave in its relationship with earth, like the energy of a lightening bolt to a tree. Nilkamal has developed the protective packaging pallets & crates in close co-operation with Govt Electronic bodies & several MNC's, material suppliers with a common goal of protecting these precious electronic components, sensors, miniaturized complex circuits from disaster effects from electro static loading as well as controlling the discharge of existing charge. Contact Nilkamal for these safety Product Range.





## FEATURES VARIABLE SELECTION CHART :

Suffix	Bottom Design	Leg Design	Leg Position	Bottom of Legs
51	Kiss-off Bottom	Stack Leg	Wing Leg	With Kiss-off
52	Flat Bottom	Round Leg	Flush Leg	Flat / No Kiss-off
53	Flat Bottom	Tapered Leg	Flush Leg	Flat / No Kiss-off
54	Kiss-off Bottom	Square Leg	Flush Leg	With Kiss-off
55	Kiss-off Bottom	Tapered Leg	Flush Leg	Flat / No Kiss-off
56	Perforated Bottom	Stack Leg	Flush Leg	Flat / No Kiss-off

### SUFFIX 51

With Kiss-off Bottom, Stacked Leg, Wing Leg, Kiss-off Bottom of Legs



**RP1210F9L51**

1200 (L) x 1000 (W) x 150 (H) MM.

Model No.	Dimensions (L X W X H) in MM.	Static Load (Kg.)	Dynamic Load (Kg.)	Rack Load(Kg.)	Internal Width (W)			Internal Length (L)		
					h	B	A+B+A	h	F	E+F+E
<b>RP1010F9L51</b>	1000 x 1000 x 145	1500	750	N.A.	105	140	610	105	140	610
<b>RP1210F9L51</b>	1200 x 1000 x 150	1500	1000	N.A.	100	140	610	100	140	810
<b>RP1212F9L51</b>	1200 x 1200 x 150	2000	1000	N.A.	110	168	852	110	168	852

### SUFFIX 52

With Flat Bottom , Round Leg, Flush Leg, Flat Bottom of Legs



**RP1212F9LUS52**

1200 (L) x 1200 (W) x 160 (H) MM.

Model No.	Dimensions (L X W X H) in MM.	Static Load (Kg.)	Dynamic Load (Kg.)	Rack Load(Kg.)	Internal Width (W)			Internal Length (L)		
					h	B	A+B+A	h	F	E+F+E
<b>RP1212F9LUS52</b>	1200 x 1200 x 160	3000	1200	N.A.	105	185	830	105	185	830
<b>RP138093POY9L52</b>	1380 x 930 x 170	2000	1000	N.A.	110	140	560	110	140	1010

### SUFFIX 53

Flat Bottom, Tapered Leg, Flush Leg, Flat Bottom of Legs



**RP1210F9LUS53**

1200 (L) x 1000 (W) x 160 (H) MM.

Model No.	Dimensions (L X W X H) in MM.	Static Load (Kg.)	Dynamic Load (Kg.)	Rack Load(Kg.)	Internal Width (W)			Internal Length (L)		
					h	B	A+B+A	h	F	E+F+E
<b>RP0707F9LU53</b>	750 x 750 x 150	1000	500	N.A.	110	100	576	110	100	576
<b>RP0907F9LU53</b>	900 x 750 x 175	1000	500	N.A.	135	100	560	135	150	550
<b>RP1210F9LUS53</b>	1200 x 1000 x 160	3000	1000	N.A.	100	130	730	100	150	900
<b>RP125100F9LUS53</b>	1250 x 1000 x 200	3000	1000	N.A.	140	150	700	140	150	950



## SUFFIX 54

With Kiss-off Bottom, Square Leg, Flush Leg, Kiss-off Bottom of Legs



## SUFFIX 55

With Kiss-off Bottom, Tapered Leg, Flush Leg, Flat Bottom of Legs



### RP1208C9LE55

1200 (L) x 800 (W) x 150 (H) MM.

Other Models Available : **RP1210C9L55**

Model No.	Dimensions (L X W X H) in MM.	Static Load (Kg.)	Dynamic Load (Kg.)	Rack Load(Kg.)	Internal Width (W)			Internal Length (L)		
					h	B	A+B+A	h	F	E+F+E
<b>RP1208C9LE55</b>	1200 x 800 x 150	1500	750	N.A.	90	100	600	90	100	1000
<b>RP1210C9L55</b>	1200 x 1000 x 150	1500	1000	N.A.	100	160	900	100	160	700

## SUFFIX 56

Perforated Bottom, Stack Leg, Flush Leg, Flat Bottom of Legs



### RP1210P9L56

1200 (L) x 1000 (W) x 150 (H) MM.

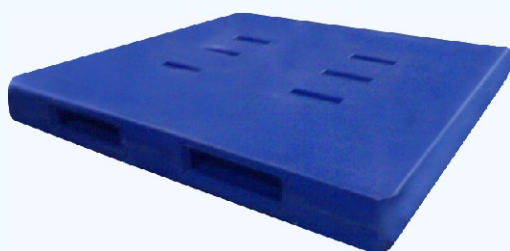


### RP1812P12LU56

1800 (L) x 1200 (W) x 180 (H) MM.

Model No.	Dimensions (L X W X H) in MM.	Static Load (Kg.)	Dynamic Load (Kg.)	Rack Load(Kg.)	Internal Width (W)			Internal Length (L)		
					h	B	A+B+A	h	F	E+F+E
<b>RP1210P9L56</b>	1200 x 1000 x 150	2000	1000	N.A.	100	140	710	100	140	910
<b>RP1812P12LU56</b>	1800 x 1200 x 180	4000	1000	N.A.	120	138	912	120	138	1524

## REVERSIBLE PALLETS



### RP1515REVUS

1500 (L) x 1500 (W) x 160 (H) MM.



### DYNAMIC USE

Suitable for storage & stacking of 100 kg. sugar bags & 50 kgs. food grain



### STATIC USE

Achieve Safety for Heavy Load

Model No.	Dimensions (L X W X H) in MM.	Static Load (Kg.)	Dynamic Load (Kg.)	Rack Load(Kg.)	Internal Width (W)			Internal Length (L)		
					h	B	A+B+A	h	F	E+F+E
<b>RP1515REVUS</b>	1500 x 1500 x 160	4000	1500	1000	60	250	950	----	----	----



The never-before innovations from **Nilkamal Design Centre** *became timeless classics* :

- **Rack Lock** : The unique “*Rack-Lock*” prevents the pallet slippage or falling off the standard racks.
- **Wings-on-Rail** : The “*Wings-on-Rail*” pallet is designed for “Drive-in” racking system.



Rack Lock with Point Load



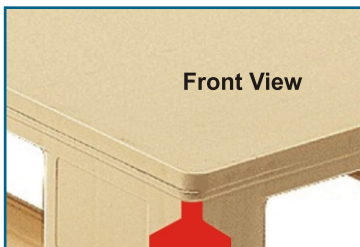
Rack Lock in action on storage systems with bags



Wings on Rail



Wings On Rail for Drive-in-racking



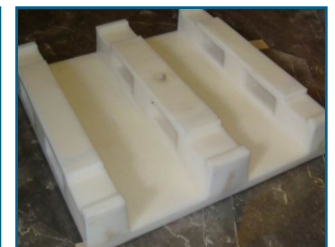
Front View



Get more strength in Stretch Wrap with “Wrap-Hook Design”



With 4 Way Entry



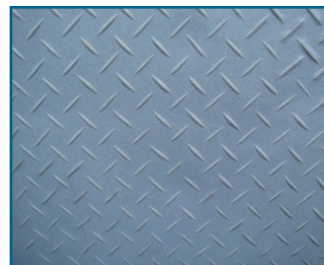
Flush Runner & Rack Lock



With PU Reinforcement



Corrugated Top Deck & Runners



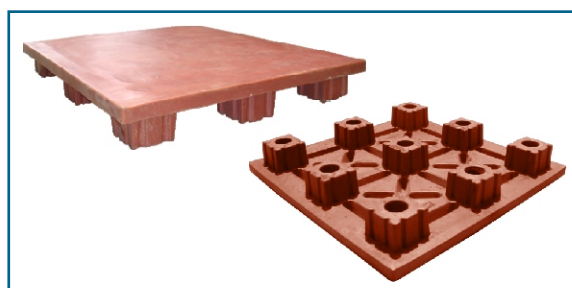
Anti-skid Chequered Surface



Perforated Top



With Steel Re-inforcement for 2 Ton Dynamic Load



With Kiss-off Bottom, Flat Top & Stacked Legs



Pallets & Box Integrated



## EXCELLENCE IN TOP DECK TEXTURE DESIGN :

Pallets for ASRS, RFID, automated hi-speed multi-tier conveyor & sensor sorting needs **special deck design & texture surface**. Thanks to in-house software based designing capabilities and further CNC machining facilities, we provide proprietary solutions and which has improved anti-slip property, improved feasibility with robotized handling and improved security and useful life of pallet & other value additions. DA mean Design A, DB is Design B & so on are exclusive never before solutions.

**DA Texture**



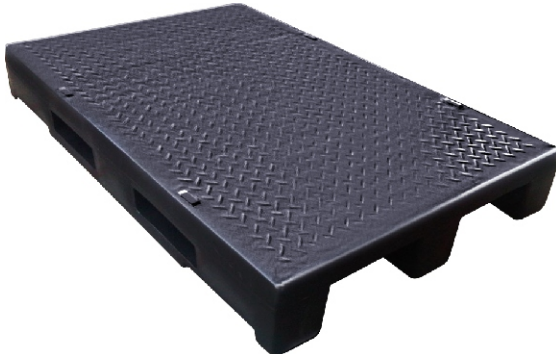
**RP1515DA3RUS6**

**DB Texture**



**RP1208DB3RUS3Z1**

**DC Texture (Chequered)**



**RP1385DC3RUS3Z1**

**DD Texture (Box Type)**



**RP1208180DD3RUS6**

**DE Texture**



**RP1210DE3RUSX3**

Visit Nilkamal Design Centre to see State-of-the-Art Software & proto-type stimulation facilities. We believe that, you will carry a similiar experience as you would have had visiting any best of the line European facility.



## SPILL PALLET WITH LID



### RMPC525L3RSPIL

1300 (L) x 1300 (W) x 575 (H) MM.  
Box with Lid, Stacking Ground +2



Model No.	Dimensions (L X W X H) in MM.	Static Load (Kg.)	Dynamic Load (Kg.)	Rack Load(Kg.)	Internal Width (W)			Internal Length (L)		
					h	B	A+B+A	h	F	E+F+E
RMPC525L3RSPIL	1300 x 1300 x 575	4000	1500	1000	110	194	918	--	--	--



**NILKAMAL LTD., NILKAMAL HOUSE, STREET NO. 14, M.I.D.C., ANDHERI (EAST), MUMBAI - 400 093.**

TEL.: (022) 2681 8628 / 8629 / 8648 / 8888 / 2836 1366 • FAX : (91-22) 2826 4453 / 2836 1923

E-mail : [pallets@nilkamal.com](mailto:pallets@nilkamal.com) • visit us at : [www.nilkamal.com](http://www.nilkamal.com)

<b>AHMEDABAD</b> Tel: (079) 2640 2663 / 2644 8324 Fax : (079) 2640 2602 E-mail : <a href="mailto:ahmedabad.ro@nilkamal.com">ahmedabad.ro@nilkamal.com</a>	<b>AURANGABAD</b> Telefax : (0240) 255 5829 / 255 4218 E-mail : <a href="mailto:aurangabad.ro@nilkamal.com">aurangabad.ro@nilkamal.com</a>	<b>BANGALORE</b> Tel. : (080) 2336 7824 Telefax : (080) 2331 6046 / 4879 E-mail : <a href="mailto:bangalore.ro@nilkamal.com">bangalore.ro@nilkamal.com</a>	<b>BARODA</b> Tel. : (0265) 2340567 Telefax : (0265) 2340569 E-mail : <a href="mailto:baroda.ro@nilkamal.com">baroda.ro@nilkamal.com</a>
<b>BHIWADI</b> Tel. : (01493) 516223 Telefax : (01493) 516213 E-mail : <a href="mailto:bhiwadi.ro@nilkamal.com">bhiwadi.ro@nilkamal.com</a>	<b>BHUBANESHWAR</b> Tel. : (0674) 2430286 / 247 1126 Fax : (0674) 2430287 E-mail : <a href="mailto:bbsr.ro@nilkamal.com">bbsr.ro@nilkamal.com</a>	<b>CHANDIGARH</b> Tel. : (0172) 2555673 Telefax : (0172) 2555674 E-mail : <a href="mailto:chandigarh.ro@nilkamal.com">chandigarh.ro@nilkamal.com</a>	<b>CHAKAN</b> Telefax : (02135) 286018 E-mail : <a href="mailto:chakan.ro@nilkamal.com">chakan.ro@nilkamal.com</a>
<b>CHENNAI</b> Telefax : (044) 2374 1547 / 49 E-mail : <a href="mailto:chennai.ro@nilkamal.com">chennai.ro@nilkamal.com</a>	<b>COCHIN</b> Tel. : (0484) 2205726 Telefax : (0484) 2205727 E-mail : <a href="mailto:kochi.ro@nilkamal.com">kochi.ro@nilkamal.com</a>	<b>COIMBATORE</b> Tel : (0422) 651 7030 / 222 0944 Telefax: (0422) 222 2662 E-mail : <a href="mailto:coimbatore.ro@nilkamal.com">coimbatore.ro@nilkamal.com</a>	<b>DEHRADUN</b> Tel. : (0135) 272 1614 E-mail : <a href="mailto:dehradun.ro@nilkamal.com">dehradun.ro@nilkamal.com</a>
<b>DELHI</b> Tel. : (011) 2561 4952 / 2562 0114 2554 1462 / 63 Fax : (011) 2562 0727 E-mail : <a href="mailto:pallets.del@nilkamal.com">pallets.del@nilkamal.com</a>	<b>FARIDABAD</b> Tel. : (0129) 4039411 / 404 7411 / 405 6411 Fax : (0129) 403 8411 E-mail : <a href="mailto:faridabad.ro@nilkamal.com">faridabad.ro@nilkamal.com</a>	<b>GHAZIABAD</b> Tel. : (0120) 282 2926 Fax : (0120) 410 8954 E-mail : <a href="mailto:ghaziabad.ro@nilkamal.com">ghaziabad.ro@nilkamal.com</a>	<b>GOA</b> Tel: (0832) 243 7284 Telefax: (0832) 243 7279 E-mail : <a href="mailto:goa.ro@nilkamal.com">goa.ro@nilkamal.com</a>
<b>GURGAON</b> Tel.: (0124) 403 5920 Telefax : (0124) 425 8504 E-mail : <a href="mailto:gurgaon.ro@nilkamal.com">gurgaon.ro@nilkamal.com</a>	<b>GUWAHATI</b> Tel. : (0361) 213 0134 Telefax : (0361) 222 9138 E-mail : <a href="mailto:guwahati.ro@nilkamal.com">guwahati.ro@nilkamal.com</a>	<b>INDORE</b> Telefax : (0731) 2571551 / 2571553 E-mail : <a href="mailto:indore.ro@nilkamal.com">indore.ro@nilkamal.com</a>	<b>JAIPUR</b> Tel.: (0141) 236 2312 / 236 0653 Telefax : (0141) 236 2311 E-mail : <a href="mailto:jaipur.ro@nilkamal.com">jaipur.ro@nilkamal.com</a>
<b>JAMMU</b> Tel. : (0191) 243 0380 Telefax : (0191) 243 1125 E-mail : <a href="mailto:jammu.ro@nilkamal.com">jammu.ro@nilkamal.com</a>	<b>JAMSHEDPUR</b> Tel. : (0657) 275 6118 Telefax : (0657) 232 0013 E-mail : <a href="mailto:jamshedpur.ro@nilkamal.com">jamshedpur.ro@nilkamal.com</a>	<b>KANPUR</b> Tel. : (0512) 2537823 / 2530072 Telefax : (0512) 2537808 E-mail : <a href="mailto:kanpur.ro@nilkamal.com">kanpur.ro@nilkamal.com</a>	<b>KOLKATA</b> Tel. : (033) 2463 7806 / 2463 0214 / 2465 8576 Telefax : (033) 2463 7807 E-mail : <a href="mailto:kolkata.ro@nilkamal.com">kolkata.ro@nilkamal.com</a>
<b>LUDHIANA</b> Tel. : (0161) 240 2812 Telefax : (0161) 240 2412 E-mail : <a href="mailto:ludhiana.ro@nilkamal.com">ludhiana.ro@nilkamal.com</a>	<b>MADURAI</b> Tel. : (0452) 2669592 / 2668379 / 2668382 Telefax : (0452) 2669591 E-mail : <a href="mailto:madurai.ro@nilkamal.com">madurai.ro@nilkamal.com</a>	<b>MANESAR</b> Tel. : (0124) 229 1930 Telefax : (0124) 229 1939 E-mail : <a href="mailto:manesar.ro@nilkamal.com">manesar.ro@nilkamal.com</a>	<b>NAGPUR</b> Telefax : (0712) 229 3978 Mobile : 98230 75623 E-mail : <a href="mailto:nagpur.ro@rediffmail.com">nagpur.ro@rediffmail.com</a>
<b>NASHIK</b> Tel. : (0253) 2452591 / 92 / 93 / 2460014 Telefax : (0253) 2464024 E-mail : <a href="mailto:nashik.ro@nilkamal.com">nashik.ro@nilkamal.com</a>	<b>NOIDA</b> Tel. : (0120) 421 4652 / 53 Telefax : (0120) 425 9940 E-mail : <a href="mailto:noida.ro@nilkamal.com">noida.ro@nilkamal.com</a>	<b>PATNA</b> Tel. : (0612) 290 7065 E-mail : <a href="mailto:patna.ro@nilkamal.com">patna.ro@nilkamal.com</a>	<b>PUNE</b> Telefax : (020) 2552 0027 / 0028 / 2553 4434 / 4435 / 2551 0585 E-mail : <a href="mailto:pallets.pune@nilkamal.com">pallets.pune@nilkamal.com</a>
<b>RAIPUR</b> Telefax : (0771) 256 2899 E-mail : <a href="mailto:raipur.ro@nilkamal.com">raipur.ro@nilkamal.com</a>	<b>RANJANGAON</b> Tel: 02137 - 646216/17. Fax: 02137- 286223 E-mail : <a href="mailto:ranjangaon.ro@nilkamal.com">ranjangaon.ro@nilkamal.com</a>	<b>RUDRAPUR</b> Tel. : (05944) 210540 E-mail : <a href="mailto:rudrapur.ro@nilkamal.com">rudrapur.ro@nilkamal.com</a>	<b>SECUNDERABAD</b> Tel. : (040) 2770 0068 / 2770 1479 Telefax : (040) 2770 0159 E-mail : <a href="mailto:secunderabad.ro@nilkamal.com">secunderabad.ro@nilkamal.com</a>

**SURAT** : Tel. : (0261) 227 4560 • Telefax : (0261) 227 4460 • E-mail : [surat.ro@nilkamal.com](mailto:surat.ro@nilkamal.com)

**VAPI** : Tel. : (0260) 240 2276 • E-mail : [vapi.ro@nilkamal.com](mailto:vapi.ro@nilkamal.com)

Overseas Office at : **DUBAI** : Tel. : (+971) 6 7401252 • Fax : (+971) 6 7401256 • E-mail : [ncbuae@emirates.net.ae](mailto:ncbuae@emirates.net.ae)

Representatives also at :

**DAHANU** : Mobile : 0982 31 23898  
**GANDHIDHAM** : Mobile : 0982 43 14012  
**HARIDWAR** : Mobile : 0971 94 18731  
**HOSUR** : Mobile : 099524 09244  
**MYSORE** : Mobile : 0990 24 88885

**RAJKOT** : Mobile : 0982 44 43458  
**TIRUPATI** : Mobile : 0984 89 64441  
**TRIVANDRUM** : Mobile : 0984 61 71261  
**VIJAYWADA** : Mobile : 0984 84 71133  
**VISHAKHAPATNAM** : Mobile : 0814 25 55620

This catalogue is issued to provide outline information only & is not deemed to form part of an offer or contract. Our policy is of continuous improvement & we reserve the right to change details without prior notice.

**A One Stop Shop For Material Handling Solutions**